

CORPORATE

# Environmental Statement 2018

including 2017 performance data

12 December 2018





# Environmental Statement 2018

including 2017 performance data

12 December 2018





## FOREWORD

The European Investment Bank Group's record of accomplishment in initiating, supporting and encouraging environmentally friendly and sustainable activities is a long and successful one. The Group has long sought to adhere to environmental standards and boasts a good deal of success. The EIB's Buildings are BREEAM certified "Excellent" and were the first to be awarded the certificate in Luxembourg. We have had the local SuperDreckskescht green label for our waste management since 2004 and have published our carbon footprint and sustainability reports since 2007. So whilst environmental activity is not new to the EIB Group, it has taken the journey towards EMAS registration during 2017 and 2018 to pull the separate strands together into a single Environmental Management System for the whole institution. This environmental statement is one of the major achievements of that journey that demonstrates the effectiveness of the institution in its internal environmental performance.

Although we have managed to reduce our GHG emissions by almost 50% since 2007, the EIB Group is just beginning as an EMAS organisation. This document and future publications of this statement are intended to raise the awareness of staff members and stakeholders, both internal and external, of the EIB Group's commitment to the environment and achievements in reducing its environmental impact.

However, it is not only at the organisational level that EMAS raises awareness, but also at the level of individual responsibility. Each small contribution to the reduction in single use plastics, sorting and correctly recycling waste and reducing the consumption of energy and water is critical to the overall result – a better and more sustainable future for all.

This, our first EMAS Environmental Statement, reports on the goals set out in our Environmental policy, adopted in 2017. It is the product of close cooperation between different EIB Group services, which together make up the EMAS team. This inter-departmental collaboration demonstrates the commitment of EIB Group staff to "walk the talk" internally, thus complementing the sustainable financing of the Group's activities. EMAS offers us the framework to manage and continually improve our internal environmental performance. Furthermore, we influence our suppliers and service providers through the adoption of Green Public Procurement (GPP) practices by including environmental criteria in our tendering processes.

We trust this statement will give an insight into the work that has been done – and will continue – through the planned improvements, goals and targets that we have set ourselves.

(signed)  
**Werner Hoyer**

## ABOUT THIS DOCUMENT

This environmental statement provides all relevant stakeholders and other interested parties with information concerning environmental performance of the European Investment Bank Group in 2017 in respect of all technical and administrative activities that support the core business processes, carried out within the EKI building. Although the EIB group has reported its environmental performance for more than a decade through our annual carbon footprint and sustainability reports, this document represents our first environmental statement to be validated under the EU Eco-Management and Audit Scheme (EMAS).

This document has been drafted in accordance with EMAS III standards, included Annexes I, II and III amended in 2017 to reflect the revised ISO 14001:2015, and is available on our [website](#). The data contained within this environmental statement relates to the reporting year 01 January 2017 to 31 December 2017. In accordance with our Environmental Management System (EMS), the EIB Group will publish an updated environmental statement in 2020.



## Contents

<b>FOREWORD</b> .....	3
<b>ABOUT THIS DOCUMENT</b> .....	4
<b>1. ABOUT THE EIB</b> .....	6
<b>2. DESCRIPTION OF THE ENVIRONMENTAL MANAGEMENT SYSTEM</b> .....	8
<b>3. ENVIRONMENTAL POLICY</b> .....	14
<b>4. ENVIRONMENTAL ASPECTS AND IMPACTS</b> .....	15
<b>5. PROGRAMME OBJECTIVES, TARGETS AND ACTIONS</b> .....	17
<b>6. ENVIRONMENTAL PERFORMANCE INDICATORS</b> .....	21
<b>7. LEGAL REQUIREMENTS</b> .....	29
<b>8. COMMUNICATIONS</b> .....	30
<b>ANNEX I – EMAS VALIDATION</b> .....	31
<b>ANNEX II – METHODOLOGICAL ASSUMPTIONS</b> .....	33

# 1. ABOUT THE EIB

## 1.1. The EIB Group

The EIB Group provides finance and technical assistance to achieve sustainable, inclusive growth through two complementary entities, the European Investment Bank (EIB or 'Bank') and the European Investment Fund (EIF). The EIB Group, consisting of both the EIB and EIF, is the European Union's long-term financing institution.

The European Investment Bank is the EU bank. The world's largest multilateral borrower and lender, it is the only bank owned by the EU Member States. The finance and assistance it provides contributes towards the achievement of EU policy goals. It also operates globally as a multilateral development bank. The EIB Institute is part of the Bank. It is dedicated to promoting European initiatives for the common good through social, cultural, educational and research activities. This includes reducing inequalities, enhancing knowledge and innovation and fostering cohesion across Europe.

The European Investment Fund specialises in risk finance to benefit micro, small and medium-sized enterprises (SMEs) and stimulates growth and innovation across Europe. It provides finance and expertise for sound, sustainable investment and guarantee operations. EIF shareholders include the EIB, the European Commission, and a wide range of public and private banks and financial institutions. By developing and offering targeted products to its financial intermediaries, such as banks, guarantee and leasing institutions, micro-credit providers and private equity funds, the EIF enhances access to finance for Small and Medium sized Enterprise (SMEs).

More background information about the EIB may be found on the website [www.eib.org](http://www.eib.org).

More background information about the EIF may be found on the website [www.eif.org](http://www.eif.org).





## 1.2. The EIB Climate Strategy

The EIB adopted its Climate Strategy on 22nd September 2015, following a comprehensive review, including a formal public consultation that was launched in January 2015. The document [“EIB Climate Strategy - Mobilising finance for the transition to a low-carbon and climate-resilient economy”](#) presents a forward-looking statement describing the Bank’s future direction and developments of its climate action.

The Climate Strategy is structured around three strategic action areas that serve as guiding orientations for the Bank’s future climate action:

- (1) Reinforcing the impact of EIB climate financing,
- (2) Increasing resilience to climate change, and
- (3) Further integrating climate change considerations across all of the Bank’s standards, methods and processes.

Within each of these strategic action areas, various operational initiatives have been introduced, such as innovative financial instruments, outreach and cooperation with stakeholders, the development of standards and methodologies and the provision of advisory services. The Climate Strategy is only applicable to the EIB. However, Action plan 10 of the Climate Strategy – Implementation of an appropriate EMS will be applicable at Group level.

As the internal environmental management is applicable at group level and the EMS is naturally an extension of the existing environmental management the EMS will also be applied at Group level.



## 2. DESCRIPTION OF THE ENVIRONMENTAL MANAGEMENT SYSTEM

### 2.1. About EMAS

The EU Eco-Management and Audit Scheme (EMAS) was established by the European Commission to assist organisations in evaluating, reporting and ultimately improving environmental performance.

EMAS is fully compatible, and largely based upon, the ISO 14001 Environmental Management System standard, but has additional requirements including conducting an initial environmental review, reporting on a set of core indicators and the publication of the Environmental Statement.

The EIB Group established its EMS in 2018, first achieving EMAS registration in March 2019. This is the first Environmental Statement to be produced by the EIB Group.



### 2.2. Context and purpose of the EMS

The implementation of an appropriate EMS across the EIB Group will be used as a mechanism to broaden the scope of the current environmental management processes that are used to manage the environmental aspects of the Group's estate and staff mobility. The EMS will be registered under the EU Eco-Management Audit Scheme – Regulation (EC) No 1221/2009 (EMAS) and Commission Regulation (EU) 2017/1505 (updated Annexes I, II and III).

The implementation of an appropriate EMS will allow the EIB Group to understand better the direct environmental aspects and impacts within the scope of the system. Furthermore, EMAS registration will reinforce systematic environmental review processes to better determine environmental aspects and impact in the future, and to develop environmental objectives and targets.

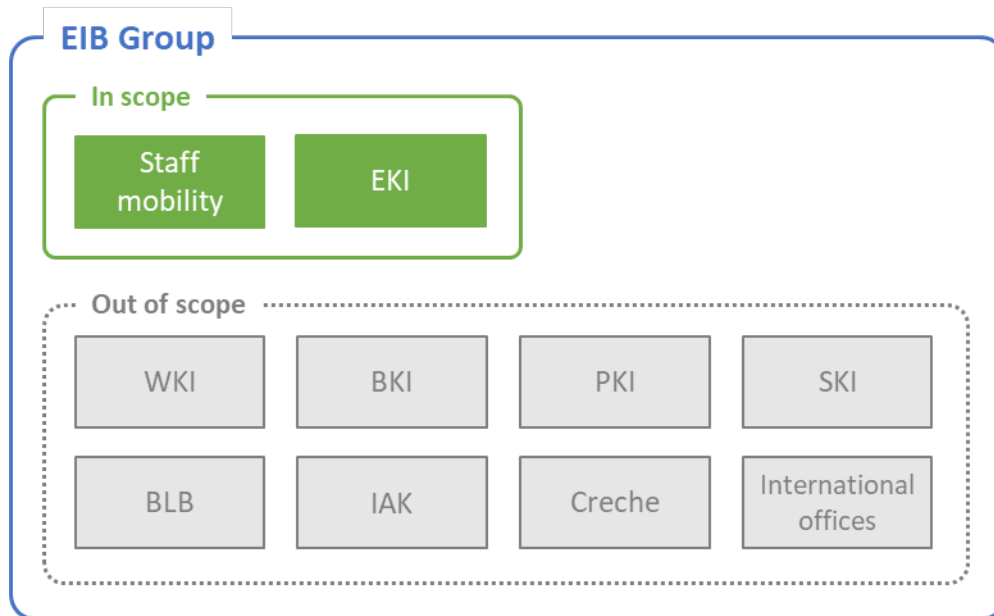
The EMS scope has been determined to be in respect of the EIB Group's direct internal environmental management to support Action plan 10 and is not intended to address the indirect impacts and aspects of the EIB Group financing.



### 2.3. Scope of the EMS

In determining the scope of EMS, the EIB Group considered the context within which the organisation operates in Luxembourg, its compliance obligations, the needs and expectations of relevant stakeholders and the level of control and influence of activities resulting in actual or potential environmental risks and impacts.

**Fig. 1 – Scope of EIB Group environmental management system**



The diagram above illustrates the buildings and subsequent aspects within scope of the EIB Group EMS. The scope of the EMS is defined as followed:

**All technical and administrative activities which support the core business, carried out within the EKI building are within scope of the EMS.**

The SKI, PKI, IAK, BKI, BLB and Crèche are excluded from the scope of EMS, as are all international offices, due a lack of control/influence over both the operation of the buildings and the approach taken to environmental management by contractors.

The WKI building has been excluded as it is scheduled for a complete refurbishment in the coming years which will leave the site unoccupied for a prolonged period.

## 2.4. The EKI building

The EKI building, has a surface area of 71,300m<sup>2</sup> spread over 10 storeys. The 11,000m<sup>2</sup> double layered glass façade stands 35m high, 170m long and is suspended from specially designed, curved, steel beams. As at 31 December 2017, a total of 832 EIB staff (FTE) were based at the EKI building. The site is rated BREEAM Excellent – the first building to achieve such a post-construction rating in continental Europe.



The site, which is located at 98-100 boulevard Konrad Adenauer, is primarily comprised of office space, meeting rooms, multiple large atria, a canteen and service areas including kitchens, plant room and loading bays. The following areas of resource consumption from EKI are included within the scope of EMAS:

- Electricity
- District heating
- Water
- Waste
- Paper

## 2.5. Staff mobility

The EIB Group holds influence through various policies and initiatives over all staff mobility. Staff mobility of EKI-based staff will therefore also be within the scope of the EMS, including:

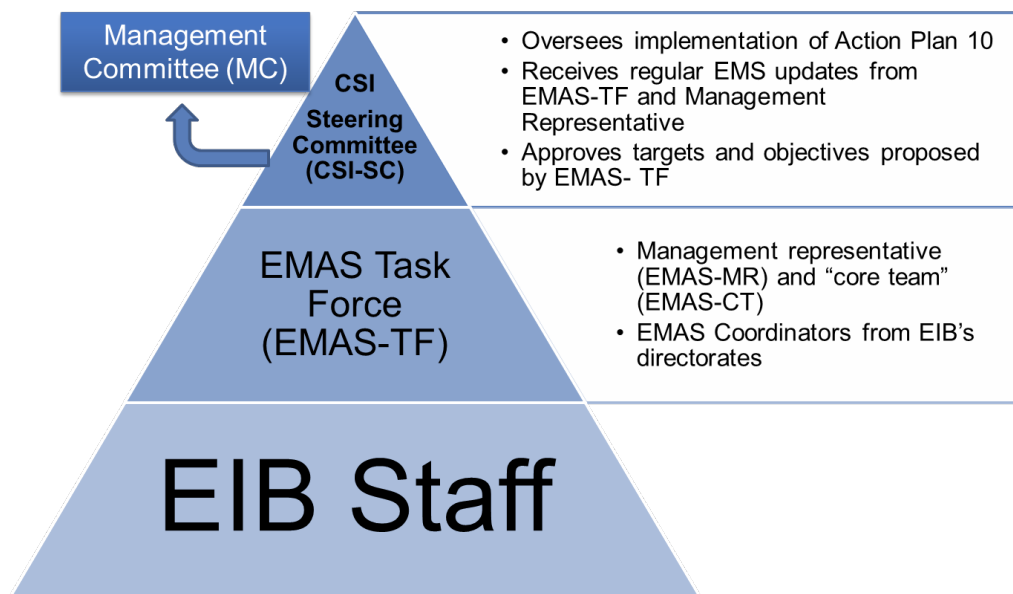
- Business travel including:
  - Flights
  - Rail travel
  - Company cars
- Employee commuting (Residence to EKI)
- Employee commuting (shuttle buses travelling between sites in Luxembourg)



## 2.6. Governance of the EMS

The success of the EIB Group's will largely be driven by the commitment and involvement of key internal stakeholders, therefore the following governance structure has been implemented:

**Fig. 2 – Environmental management system governance**



**Management Committee (MC)** – Ultimately responsible for the implementation of the Climate Strategy, the MC will be kept informed of the performance of the EMS.

**Steering Committee (SC)** – As the body responsible for the implementation of Action plan 10, the SC will, at planned intervals, review the continued suitability, adequacy and effectiveness of the EMS.

**EMAS Task Force (TF)** – The Task Force, which includes representatives from business areas across the EIB Group, is tasked with providing input and feedback to the EMAS Management Representative so that the interests of each business area is appreciated and understood. Representatives champion and communicate EMAS within their own business area in order to support the integration of EMS working practices.

**EMAS Core Team (CT)** – Comprised of the EMAS Management Representative and EMAS coordinators, the CT are tasked with implementing EMAS within the EIB Group on a day to day basis. This includes carrying out all planned communications, implementing procedures and processes and ensuring legal compliance is achieved.

**EMAS Management Representative (MR)** – The MR is responsible for establishing and implementing EMAS at the EIB Group and acts as project manager. Specific responsibilities include maintaining EMAS

documentation, coordinating the CT and TF, communicating with the SC and MC, acting as the main point of contact for EMAS inquiries, producing the Environmental Statement and tracking and reporting on progress against objectives and targets.

**EIB Staff** – It is the responsibility of staff within the scope of the EMS to adhere to working practices implemented under EMAS, and to continually attempt to reduce the environmental impact of every day work.



### 3. EMAS ENVIRONMENTAL POLICY

The European Investment Bank Group (European Investment Bank and European Investment Fund) has a duty to protect the environment in which it operates. The EIB Group fully commits to improving its environmental performance across all of its internal business activities and encourages its business partners and members of the wider community to join it in its effort. The EIB Group will take steps to register its Environmental Management System (EMS) in accordance with the EU Eco- Management and Audit Scheme (EMAS) Regulation.

This [EIB Group EMAS Environmental Policy](#) is the framework for action and setting strategic environmental objectives and targets for the EIB Group's internal activities. The Policy was approved by the Management Committee and signed by the President in July 2018 and is available on the website in three language and will periodically be updated as appropriate. The EIB Group recognises its key environmental impacts within the scope of the EMS and shall strive to:

- Adopt relevant environmental standards and requirements in all areas of its internal operations.
- Assess its internal activities and identify areas to continuously improve its environmental performance.
- Continue to reduce its internal CO<sub>2</sub> emissions.
- Prevent pollution that may arise as a result of its internal activities and minimise waste through the careful and efficient use of materials.
- Purchase sustainable products for its own account wherever feasible [e.g. recycled, FSC or low environmental impact products and energy from renewable sources].
- Enhance environmental considerations in procurement decisions for its own account where appropriate.
- Reduce risks from environmental, health or safety hazards for employees and others in the vicinity of its operations.
- Train and communicate environmental policies to employees.
- Publicise its environmental situation.

**The EIB Group will communicate this policy statement to its staff, suppliers/contractors concerned, and other interested parties; it will be published on the Group's websites.**



## 4. ENVIRONMENTAL ASPECTS AND IMPACTS

To understand our environmental performance, in Spring 2018, the EIB Group undertook a systematic review of all environmental “aspects” and the corresponding environmental “impacts” linked to our business activities. Environmental aspects concern the area or type of environmental impact, such as energy or water usage. Environmental impacts consider the specific deleterious effects that may arise, such as air pollution, depletion of natural resources and contribution towards the Greenhouse effect. The review also considered whether the aspects identified were under “direct” or “indirect” control of EIB Group. Any direct aspects concern business activities where EIB Group is in direct management control of the activity itself whereas “indirect” aspects are those that are managed by third parties. In such case, the EIB Group may still influence the activity through engagement.

The environmental aspects identified by this review provide the foundational basis of our environmental system, which seeks to reduce our environmental impacts through the ongoing performance management of these aspects. By evaluating all environmental aspects against pre-defined criteria as specified with the EU Eco-Management Audit Scheme – Regulation (EC) No 1221/2009 (EMAS) and Commission Regulation (EU) 2017/1505 (updated Annexes I, II and III), we can thereby perform a risk-based assessment of the probability, severity and frequency of impact, and the EIB Group’s ability to influence and control these impacts.

Any environmental aspects that are already subject to existing environmental legislation where deemed to be “significant” alongside any aspects prioritised in accordance with expected probability, severity, frequency of impact and the EIB Group’s ability to influence and control.



All environmental aspects arising from EIB Group activities are detailed in the table below:

	ENVIRONMENTAL ASPECT	ENVIRONMENTAL IMPACT	ACTIVITIES
<b>Significant</b>	 <b>Air emissions</b>	<b>Air pollution</b> <b>Greenhouse effect</b>	Business travel Staff commuting Building plant equipment
	 <b>Energy &amp; fuel use</b>	<b>Depletion of natural resources</b> <b>Greenhouse effect</b>	Business travel Heating, ventilation & cooling Lighting IT Equipment
<b>Other</b>	 <b>Paper use</b>	<b>Depletion of natural resources</b>	Printing Communications Office use
	 <b>Water use</b>	<b>Depletion of natural resources</b>	Toilets Catering Cleaning Building plant Drinking water
	 <b>Waste production</b>	<b>Air, water &amp; ground pollution</b>	Catering Cleaning Office consumables IT Equipment Events

## 5. PROGRAMME OBJECTIVES, TARGETS AND ACTIONS

### 5.1. Objectives

To achieve the EIB Group goals of improving its environmental performance, we have identified the following objectives:

	OBJECTIVE
01	Adopt relevant environmental standards and requirements in all areas of internal operations
02	Continue to reduce internal CO <sub>2</sub> emissions
03	Prevent pollution that may arise as a result of internal activities and minimise waste through the careful and efficient use of materials
04	Purchase sustainable products for own account wherever feasible [e.g. recycled, FSC or low environmental impact products and energy from renewable sources]
05	Enhance environmental considerations in procurement decisions for own account where appropriate
06	Reduce risks from environmental, health or safety hazards for employees and others in the vicinity of operations

## 5.2. Targets

Each identified objective is supported by one or more targets that have been detailed below.

	TARGET	BASELINE
1.1	Achieve ISO 14001 certification before January 2019	2017
1.2	Achieve EMAS certification before January 2019	2017
1.3	Retain SuperDrecksKeschert certification annually	2017
2.1	Reduce Group emissions by 20-30% by 2020	2007
2.2	Reduce electricity consumption at the EKI building by 3% per FTE by 2021	2017
2.3	Reduce energy associated with heating at the EKI building by 3% per m2 by 2021	2017
2.4	Reduce water consumption at the EKI building by 3% per FTE by 2021	2017
3.1	Reduce organic waste at the EKI building by 3% per FTE by 2021	2017
3.2	Reduce general waste at the EKI building by 3% per FTE by 2021	2017
3.3	By end of 2019, remove all unnecessary plastics from catering areas	2017
4.1	In 2019, at least 75% of corporate procurement procedures handled by CS/IMP/PROCUR and published in the OJEU involving one of the product categories listed under section 3.1 will include environmental requirements in the selection criteria	2017
4.2	In 2019, at least 75% of the technical specifications for corporate procurement procedures handled by CS/IMP/PROCUR and published in the OJEU involving one of the product categories listed under section 3.1 will be sent to the EU GPP HelpDesk by CS/IMP/PROCUR with a request for advice on "greening" the specifications	2017
5.1	By end of 2019, all CS/IMP/PROCUR staff, including newcomers, will undergo appropriate GPP training	2017
5.2	In 2019, all staff involved in procurement procedures handled by CS/IMP/PROCUR will be given systematic access to EIB's EMAS environmental policy and the Handbook for Green Public Procurement	2017

### 5.3. Actions

In order to realise our stated objectives and targets, we have identified the corresponding actions need to deliver the environmental management system as a whole, or to address particular aspects and impacts covered by the system.

	ACTION	Due	Status
A1	Establish ISO 14001 EMS, and achieve EMAS registration	Dec-18	Complete
A2	Ensure waste management practices continue to meet the standards required of SuperDrecksKescht certification	Dec-18	Complete
A3	Offset residual GHG emissions resulting from internal operations	Ongoing	Complete
A4	Purchase 100% renewable electricity covered by Guarantees of Origin	Dec-17	Complete
A5	Purchase steam generated from wood pellet biomass	Dec-18	Complete
A6	Install sub-metering to improve data quality	Dec-18	Complete
A7	Replace transportation fleet with more fuel efficient Navette	Dec-17	Complete
A8	Update travel policy	Dec-20	Scheduled
A9	Promote use of video conferencing facilities	Dec-18	Complete
A10	Maintain BREEAM in-use certification	Dec-19	In progress
A11	Change remaining halogen lamps in restaurant and cafeteria to LED alternatives	Dec-19	Proposed
A12	Ensure all new kitchen equipment procured is A++	Dec-19	Proposed
A13	Reduce internal temperature by 1 C	Jun-19	Proposed
A14	Adjust the settings on the Air Handling Units	Jun-19	Proposed
A15	Cover glass with film in certain areas to limit the loss of heat	Dec-19	Proposed
A16	Install a tank to collect rain water for use	Dec-19	Proposed
A17	Begin reporting organic waste production on a quarterly basis	Dec-19	In progress

<b>A18</b>	Conduct audit to identify ways to reduce organic waste production	<b>Mar-19</b>	<b>Proposed</b>
<b>A19</b>	Conduct audit to identify ways to reduce general waste production	<b>Mar-19</b>	<b>Proposed</b>
<b>A20</b>	Begin reporting general waste production on a quarterly basis	<b>Dec-19</b>	<b>In progress</b>
<b>A21</b>	Conduct a plastics audit to assess what can be removed	<b>Jun-19</b>	<b>Scheduled</b>
<b>A22</b>	Insert environmental requirements into selection criteria of relevant corporate procurement procedures	<b>Dec-19</b>	<b>In progress</b>
<b>A23</b>	Implement Follow-Me printing to reduce paper waste	<b>Dec-17</b>	<b>Complete</b>
<b>A24</b>	Send relevant corporate procurement procedures to EU GPP HelpDesk with a request for advice of greening the specifications	<b>Dec-19</b>	<b>In progress</b>
<b>A25</b>	Deliver GPP training to all CS/IMP/PROCUR staff	<b>Dec-19</b>	<b>In progress</b>
<b>A26</b>	Provide EMAS environmental policy and handbook for GPP to all staff involved in procurements procedures handled by CS/IMP/PROCUR	<b>Dec-19</b>	<b>Scheduled</b>

## 6. ENVIRONMENTAL PERFORMANCE INDICATORS

### 6.1. ENERGY

To support business activities at the EKI building, two principal energy sources are consumed.

- **Purchased electricity** provides the requisite power for all onsite lighting, IT equipment, operation of lifts, ventilation & cooling and other electrical equipment.
- **Heating** for the EKI Building is provided by the Kirchberg energy plant, which uses biomass to generate over 50% of the heat supplied to the Kirchberg district.

Since 2009, all electricity supplied to the EKI building is generated from 100% renewable sources and backed by guarantees of origin.

ENERGY	CONSUMPTION	2017	2016
<b>Gross energy</b>	<b>Total energy consumption (MWh)</b>	<b>8,924</b>	<b>8,760</b>
	Total renewable energy (MWh)	8,924	8,760
	%age renewable energy	100%	100%
	<i>Of which generated onsite</i>	<i>0%</i>	<i>0%</i>
<b>Gross energy by activity</b>	<b>Total electricity (MWh)</b>	5,707	5,717
	<b>Total heating (MWh)</b>	3,217	3,043
<b>Relative energy (per m<sup>2</sup>)</b>	<b>Energy intensity (MWh/per m<sup>2</sup>)</b>	<b>0.12</b>	<b>0.12</b>
	Electricity (MWh/m <sup>2</sup> )	0.08	0.08
	Heating (MWh/m <sup>2</sup> )	0.04	0.04
<b>Relative energy (per FTE)</b>	<b>Energy intensity (MWh/FTE)</b>	<b>10.7</b>	<b>12.3</b>
	Electricity (MWh/FTE)	6.9	8.0
	Heating (MWh/FTE)	3.9	4.3

### Targets

2.2

Reduce electricity consumption at the EKI building by 3% per FTE by 2021 (Baseline: 2017)

2.3

Reduce energy associated with heating at the EKI building by 3% per m<sup>2</sup> by 2021 (Baseline: 2017)

## Actions

- A4 Purchase 100% renewable electricity covered by Guarantees of Origin
- A5 Purchase steam generated from wood pellet biomass
- A6 Install sub-metering to improve data quality
- A10 Maintain BREEAM Excellent-in-Use Certification
- A11 Change remaining halogen lamps in restaurant and cafeteria to LED alternatives
- A12 Ensure all new kitchen equipment procured is A++
- A13 Reduce internal temperature by 1 C
- A14 Adjust the settings on the Air Handling Units
- A15 Cover glass with film in certain areas to limit the loss of heat





## 6.2. PAPER CONSUMPTION

To support EIB Group business activities, paper is required for the production of printed materials for both internal and external consumption. We have undertaken several measures to reduce paper consumption in recent years, including the removal of all local Deskjet printers in 2015 and the implementation of the “follow-me” printing system that allows users to print to a shared queue from which jobs are automatically deleted if not released within 24 hours. Most paper procured and consumed is standard A4 office paper 100% recycled.

PAPER	CONSUMPTION	2017	2016
Gross consumption	Total paper consumption (tonnes)	33.9	37.4
Relative consumption (per FTE)	Paper consumption (tonnes/FTE)	0.04	0.05

### Targets

4.1

In 2019, at least 75% of corporate procurement procedures handled by CS/IMP/PROCUR and published in the OJEU involving one of the product categories listed under section 3.1 will include environmental requirements in the selection criteria (Baseline: 2017)

### Actions

A23

Implement Follow-Me printing to reduce paper waste

### 6.3. WATER CONSUMPTION

Water consumption at the EKI building is linked to headcount and is primarily associated with the use of lavatories, office cleaning and catering.

WATER	CONSUMPTION	2017	2016
<b>Gross consumption</b>	<b>Total water consumption (m<sup>3</sup>)</b>	18,153	15,713
<b>Relative consumption (per FTE)</b>	<b>Water consumption (m<sup>3</sup>/FTE)</b>	21.8	22.0

#### Targets

2.4

Reduce water consumption at the EKI building by 3% per FTE by 2021 (Baseline: 2017)

#### Actions

A16

Install a tank to collect rain water for use

### 6.4. WASTE PRODUCTION

The principal forms of waste generated by at the EKI building include general waste from office use, paper waste and organic waste from the shared use of catering facilities. Additional forms of waste include Glass, Plastic, Metal, Wood and WEEE (waste electrical and electronic equipment).

Waste	CONSUMPTION	2017	2016
<b>Gross production</b>	<b>Total waste production (tonnes)</b>	<b>162.0</b>	<b>151.5</b>
	Total hazardous waste (tonnes)	4.3	
<b>Relative production (per FTE)</b>	<b>Total waste production (tonnes/FTE)</b>	<b>0.19</b>	<b>0.21</b>
	Total hazardous waste (tonnes/FTE)	0.01	
<b>By type</b>	<b>Total organic waste (tonnes)</b>	75.3	35.8
	<b>Total general waste (tonnes)</b>	34	54

	<b>Total plastic waste (tonnes)</b>	4	3
	<b>Organic waste per FTE</b>	0.09	0.05
	<b>General waste per FTE</b>	0.04	0.08
	<b>Plastic waste per FTE</b>	0.00	0.00

## Targets

- 1.3** Retain SuperDrecksKeschert certification annually (Baseline: 2017)
- 3.1** Reduce organic waste at the EKI building by 3% per FTE by 2021 (Baseline: 2017)
- 3.2** Reduce general waste at the EKI building by 3% per FTE by 2021 (Baseline: 2017)
- 3.3** By end of 2019, remove all unnecessary plastics from catering areas (Baseline: 2017)

## Actions

- A2** Ensure waste management practices continue to meet the standards required of SuperDrecksKeschert certification
- A21** Conduct a plastics audit to assess what can be removed

## 6.5. GHG EMISSIONS

The EIB Group aims to lead by example in managing our environmental performance and disclosing the impact of our operations and has reported its environmental performance and emissions since 2007.

EIB Group carbon footprint analysis in 2017 follows the World Resources Institute GHG Protocol, consistent with the approach adopted in 2017. The GHG Protocol is recognised as the most widely used international accounting tool for government and business leaders to understand, quantify, and manage greenhouse gas emissions. It is an international standard used by a diverse range of organisations, including many in the banking sector, and it is widely accepted as best practice.

To calculate the GHG emissions inventory, we identified all relevant GHG emissions sources and collected activity data from the relevant Group services and applied the emission factors, calculating emissions from each source. This data was then aggregated to create EIB Group's total carbon footprint – see Annex II for further information of the methodological assumptions made.

Our reported emissions can be divided into two main areas:

- **Buildings-related emissions** including purchased electricity and steam, and emissions linked to the consumption of paper, water and waste.
- **Mobility emissions** arising from all business travel (including flights, rail, owned vehicles) and employee commuting

Mobility emissions account for the majority of EKI emissions on both a gross and net basis, as both purchased electricity and steam from renewable sources are considered to generate net zero emissions.

WATER	CONSUMPTION	2017	2016
<b>Gross emissions</b>	<b>Total emissions (tCO<sup>2</sup>e)</b>	<b>6,633</b>	<b>6,175</b>
	Total buildings emissions (tCO <sup>2</sup> e)	1,925	2,056
	Total mobility emissions (tCO <sup>2</sup> e)	4,708	4,119
<b>Relative emissions (per FTE)</b>	<b>Total emissions (tCO<sup>2</sup>e/FTE)</b>	<b>8.0</b>	<b>8.6</b>
	Total buildings emissions (tCO <sup>2</sup> e/FTE)	2.3	2.9
	Total mobility emissions (tCO <sup>2</sup> e/FTE)	5.7	5.8

## Targets

2.1

Reduce Group emissions by 20-30% by 2020 (Baseline: 2007)

## Actions

A3

Offset carbon emissions

A7

Replace transportation fleet with more fuel efficient Navette (minibus)

A8

Update travel policy



## 6.6. BIODIVERSITY

The EKI building is situated at the top of the hill of Val des Bons Malades with open spaces on the site consisting of lawns, meadows, isolated trees and remnants of the old forest (that are protected under local law). The lawns are located directly adjacent to the EKI building, encircling it on the north, east and west, while the meadows can be found on the north-eastern part of the site. The old forest is located on the northern part of the site bordering the Val des Bons Malades.

BIODIVERSITY	CONSUMPTION	2017	2016
<b>By type (m<sup>2</sup>)</b>	<b>Total land (m<sup>2</sup>)</b>	71,300	71,300
	Green spaces (m <sup>2</sup> )	4,245	4,245
<b>Relative (% of total space that is green space)</b>	<b>Proportion of total land that is green spaces (%)</b>	<b>5.9</b>	<b>5.9</b>

Fig. 3 – Satellite view of EKI Building and green spaces (Map data ©2018 Google)



## 7. LEGAL REQUIREMENTS

The EIB Group is required to comply with a range of applicable environmental legislation at a local, national and European level. These form the mandatory legal requirements that the EIB Group has committed to meet as part of the EMS.

In order to comply with these requirements, the EIB Group maintains a comprehensive register of environmental regulations that was compiled by, and is maintained by, an external expert on environmental regulations on a regular basis. This register includes, but is not limited to, the following:

- Environmental permits issued by the Luxembourg Ministry of Environment
- Regulations related to the recycling, separation and disposal of waste
- Regulations related to health and safety including the storage, handling and disposal and hazardous substances
- Regulations related to the emission of air pollutants, gases and dust
- Regulations related to energy efficiency, energy management, building maintenance and refrigerant usage
- Regulations related to water, waste water, effluent and sewerage

Applicable environmental regulations are managed by the relevant business area, who are made aware of any relevant changes/updates to regulations. The majority of environmental regulations are applicable to the operation and maintenance of the building and are thus managed by the Building & Logistics Department (BLD), which sits within the Corporate Services Directorate.



## 8. COMMUNICATIONS

Whether it be from reducing electricity consumption through the efficient use of IT devices or minimising paper consumption through reducing the amount we print, staff, contractors and visitors can have a large degree of influence on the environmental impacts of the EKI building. In order to encourage and facilitate environmentally friendly behaviours therefore, the EMAS team at the EIB Group have actively engaged in a range of communications and activities aimed at raising environmental awareness and changing behaviours.

In 2018, the EIB Group celebrated 60 years of improving lives in Europe and beyond, having initially opened its doors in March 1958. In June, the EIB Group organised the 60th anniversary Games where staff participated in an EMAS-themed quiz and treasure hunt. In July, the EIB Group officially launched EMAS internally with Vice President Taylor joining a range of delegates from other European institutions, as well as EIB Group staff, to discuss and emphasise the crucial role that EMAS will play in helping the EIB Group to minimise the environmental impact of its operations.

Throughout the year, the EMAS team have used the EIB Group's intranet to communicate with staff about a range of environmental initiatives that are being driven by EMAS, and to signpost staff to the myriad of environmental resources and guidance available to them online via the intranet.

To tie in with EU Mobility Week in September, the EMAS team launched a joint communications campaign to highlight the sustainable travel options that staff can take advantage of to minimise the impact of commuting. In November, the EIB Group worked closely with the catering contractor to remove unnecessary single-use plastics, such as stirrers and toothpicks, from the canteen and communicate the environmental benefits of doing so to EIB Group staff.

The EMAS team, in cooperation with the Communications team of the Group, will use the full range of internal and external communications methods available; concentrating more on high impact techniques such as video and face-to-face presentations to staff, stakeholders and interested parties. The EIB has excellent communications with other EU institutions, governmental and non-governmental bodies in Luxembourg to share experiences and widen the environmental activities and initiatives available.

Furthermore, it is important to the EIB Group that the public and wider community are aware of the efforts that the Group is making to reduce its environmental impact. That is why the EMAS environmental policy was published online in 2018, and why the Group has published its annual carbon footprint online since 2007. The Group intends to continue demonstrating its commitment to reducing the organisation's environmental impacts through the annual publication of both the carbon footprint report and the EMAS Environmental Statement. The 2019 EIB Group Environmental Statement will be published in May 2019 and will include 2018 performance data.



## **ANNEX I – EMAS VALIDATION**

# Validation declaration

## Community Eco-Management and Audit Scheme (EMAS)

**VINÇOTTE nv**

Jan Olieslagerslaan 35, 1800 Vilvoorde, Belgium

Based on an audit of the organisation, visits of its site, interviews with its staff, and the examination of the documentation, the data and the information, documented in the verification report N° **60711219**, VINÇOTTE nv declares, in its capacity as environmental EMAS verifier with registration number BE-V-0016, accredited for the scope 1, 10, 11, 13, 16, 18, 19, 20 (excl. 20.51), 21, 22, 23, 24, 25, 26, 27, 28, 29, 30.2, 30.9, 31, 32, 33, 35, 36, 37, 38, 39, 41, 42, 43, 45, 46, 47, 49, 50, 52, 53, 55, 56, 58, 59, 60, 62, 63, 70, 71, 72, 73, 74, 79, 80, 81, 82, , 84, 85, 86, 87, 88, 90, 93, 94, 95, 96, 99 (NACE-code), to have verified whether **the whole organisation** as indicated in the **environmental statement 2018** of the organisation

### **European Investment Bank Group**

located at

**100, Boulevard Konrad Adenauer  
2950 Luxembourg  
Luxembourg**

and used for:

**All technical and administrative activities which support the core business, carried out within the EKI building in Luxembourg.**

Meet all requirements of Regulation (EC) No 1221/2009 on the voluntary participation by organisations in a Community eco-management and audit scheme (EMAS), as amended by Regulation (EU) 2017/1505.

By signing this declaration, I declare that:

- The verification and validation has been carried out in full compliance with the requirements of Regulation (EC) No 1221/2009 amended by Regulation (EU) No 2017/1505;
- The outcome of the verification and validation confirms that there is no evidence of non-compliance with applicable legal requirements relating to the environment
- The data and information of the **environmental statement 2018 of the organisation** reflect a reliable, credible and correct image of **all the organisation** activities, within the scope mentioned in the environmental statement.

This document is not equivalent to EMAS registration. EMAS registration can only be granted by a Competent Body under Regulation (EC) No 1221/2009 amended by Regulation (EU) No 2017/1505. This document shall not be used as a standalone piece of public communication.

Declaration number: **18 EA 105**  
Date of issue: **December 17, 2018**



For the environmental verifier:

A handwritten signature in blue ink, appearing to read "Eric Louys".

Eric Louys  
Chairman Certification Commission



## ANNEX II – METHODOLOGICAL ASSUMPTIONS

In order to report the Group's carbon footprint and the metrics required within this Environmental Statement, it is necessary in certain circumstances to estimate, extrapolate or convert consumption data. The EIB Group follows the WRI GHG Protocol, and has therefore chosen to detail all assumptions made and steps taken to demonstrate that the approach taken is consistent with the reporting principles of consistency and transparency:

### Headcount

- All headcount data contained within this report is reported in terms of full-time equivalents (FTE) and sourced from personnel. EKI FTE figures includes only EIB Group staff, and thus exclude contractors.

### Buildings

#### Electricity

- Monthly energy consumption data was recorded for the WKI/EKI campus in 2017, with a consistent 60:40 split assumed i.e. 40% of total WKI/EKI energy consumption is attributed to EKI. From 2018, sub-metering has been installed so consumption data specific to EKI is available.
- Electricity emissions are considered zero CO<sub>2</sub> on a net basis, as all purchased electricity is sourced from 100% renewable sources.

#### Purchased steam

- Monthly consumption data is recorded for EKI.
- The emissions factor is sourced from the supplier, Ville de Luxembourg. In 2017, the Kirchberg plant was converted to use over 50% wood pellets and so this energy supply is also considered to be zero emissions on a net basis.

#### Data centres

- Monthly consumption data is reported to the EIB Group from our external data centres. A proportion of total data centre consumption is apportioned to EKI based on percentage headcount.
- The emissions factor applied against data centre electricity is the national grid average emissions factor for Luxembourg, sourced from the International Energy Agency (IEA).

#### Water

- Monthly consumption data is recorded for EKI. The Defra emissions factor for water supply and waste water is applied against water consumption data.

#### Waste

- Monthly consumption data is historically recorded at a campus level, with details of waste type, disposal method and EWC code. The total weight of waste is then apportioned to EKI based on percentage headcount.
- From 2018, more granular recording and reporting of waste will be available at the individual building level to give a more accurate view of EKI waste.
- Conversion of waste to CO<sub>2</sub> uses emissions factors sourced from Defra.

## Paper

- Paper consumption and emissions are calculated using supplier statistics of output from our local printers and also procurement data from our copy centre.
- The copy centre data includes procurement data for our local printers and so this is excluded to avoid double counting. The local printer statistics show the total number of A3 and A4 pages printed each month across all office printers.
- We conservatively assume that 1 page is printed on 1 sheet of paper and are working with our suppliers to improve the accuracy of printer statistics.
- We also take account of paper size (e.g. A3, A4) and paper weight (grams per square meter), converting all paper into sheets of 100 GSM A4 equivalent. The total weight of paper consumption is converted into emissions using Defra emissions factors for material use.
- The total consumption is then apportioned to EKI based on percentage headcount.

## Travel

### Flights

- We receive a detailed breakdown of all flights from our travel agent, with details of total distance, cabin class, original and destination.
- This information is used to determine the “haul” according to Defra classifications (e.g. “Domestic” – to/from UK; “Short Haul” – <3,700 km to/from UK; “Long haul” - >3,700 km to from UK and “International” – any flights that are not to or from UK).
- Conversion to CO<sub>2</sub> uses the Defra emissions factors for flight haul and cabin class (e.g. economy, business, etc.).
- Total emissions from flights are then apportioned to EKI based on percentage headcount, although we are working to provide a more accurate dataset using staff location.

### Rail

- We receive a detailed breakdown of all rail travel from our travel agent, with details of total distance, original and destination etc.
- Conversion to CO<sub>2</sub> uses Defra emissions factors for “International Rail”.
- Total emissions from rail travel are then apportioned to EKI based on percentage headcount, although we are working to provide a more accurate data set using staff location.

### Commuting

- For the EKI building, we record the average number of available car parking spaces per month.
- This is subtracted from the total available spaces to give an average used spaces per month.
- An average daily commute distance of 35km is applied based on a 2007 EU survey and multiplied by the number of working days to give a total distance per month / quarter.
- Conversion to CO<sub>2</sub> then uses the Defra unknown average vehicle emissions factor.

### Company cars

- Monthly odometer readings are taken for each company owned vehicle.
- Mileage in kilometres is determined by subtracting the previous readings from the latest.
- Emissions are calculated using the manufacturers stated CO<sub>2</sub> per km travelled for each vehicle.
- An average emissions factors is calculated based on total.

## Car rentals

- All car rental data is sourced from two main providers:
  - For one, we receive a detailed breakdown of mileage travelled for both petrol and diesel cars.
  - For the other, we receive a summary of average km travelled per day each quarter, fuel type not specified.
- Total mileage is determined by aggregating these figures and then apportioning to EKI based on percentage headcount of group total.
- Emissions are calculated using Defra emissions factors for average petrol, average diesel and unknown average respectively.

## Minibus

- Data provided covers total fuel consumption and mileage for the Navette minibuses.
- Conversion to CO<sub>2</sub> is based on the manufacturer's emissions factor of CO<sub>2</sub> per litre of fuel consumption.





**CORPORATE**

# **Environmental Statement 2018**

including 2017 performance data

12 December 2018



The EIB Group consists of the European Investment Bank and the European Investment Fund.

**European Investment Bank**  
98-100, boulevard Konrad Adenauer  
L-2950 Luxembourg  
☎ +352 4379-22000  
[www.eib.org](http://www.eib.org) – ✉ [info@eib.org](mailto:info@eib.org)

**European Investment Fund**  
37B, avenue J.F. Kennedy  
L-2968 Luxembourg  
☎ +352 2485-1  
[www.eif.org](http://www.eif.org) – ✉ [info@eif.org](mailto:info@eif.org)